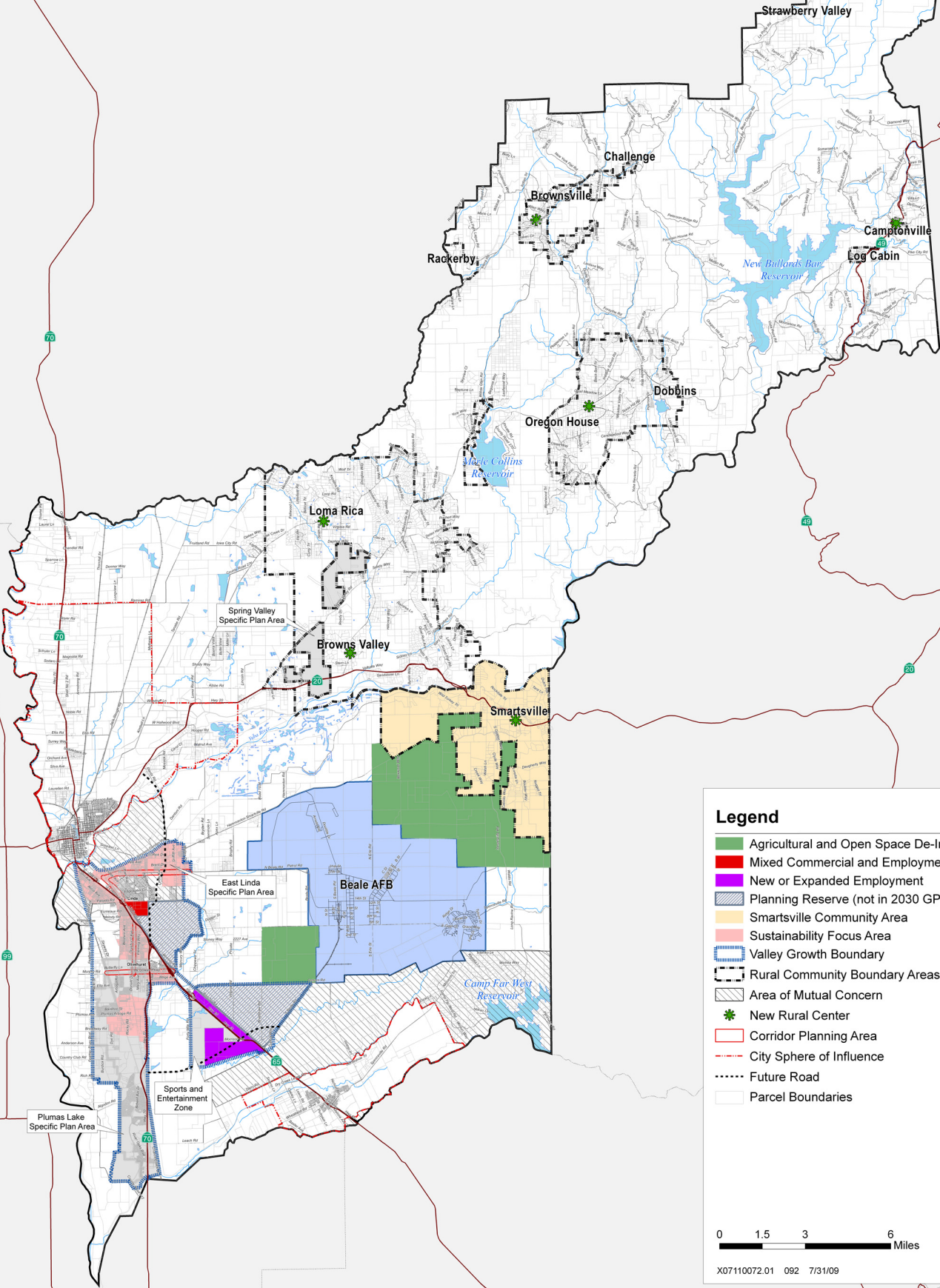




# SUSTAINABLE YUBA COUNTY

## Economy, People & Natural Resources



**Legend**

- Agricultural and Open Space De-Intensification
- Mixed Commercial and Employment
- New or Expanded Employment
- Planning Reserve (not in 2030 GPU)
- Smartsville Community Area
- Sustainability Focus Area
- Valley Growth Boundary
- Rural Community Boundary Areas
- Area of Mutual Concern
- New Rural Center
- Corridor Planning Area
- City Sphere of Influence
- Future Road
- Parcel Boundaries

0 1.5 3 6 Miles

X07110072.01 092 7/31/09